



M&M Mars tour is sweet

Written by Rebecca Miller and Wendy Landwehr

Twenty-five lucky women and men participated in the tour of MasterfoodsUS, a division of Mars, Inc. The M&M Mars Chicago plant produces Pop'ables, Celebration chocolates, Milky Way, Snickers, 3 Musketeers and Munch candy bars.

The night began with pizza, provided by Mars, with an introduction to the M&M Mars corporation and history of the Chicago plant (built in 1929!). The tour participants were then able to see two of the production lines, one for the large Snickers Almond bar and one for miniature Snickers. Interestingly, the miniature Snickers were being packaged for Halloween. They keep those candy bars cold to extend the life of the chocolate until the day is closer.

We looked like factory workers as we embarked on the tour, wearing lab coats, hairnets, hard hats, and ear plugs. The tour was a hit right away, just walking to the factory and taking in the odor— Heavenly! The smell of the room where the chocolate coating was prepared would make a chocolate lover drool. What was the best part of the night? Was it the vat of marshmallow goo being mixed with the rest of the Snickers ingredients? Or

was it the caramel being rolled out and placed onto the remainder of the candy bar? No, I believe it was taking that Snickers bar right from the line to eat - it was fresh and delicious!

A couple of interesting facts about the company.

- * The Chicago site employs 440 people.
- * It is still family owned even though they have acquired several subsidiaries.
- * There is a high company spirit among the employees fueled by the management style.
- * The office area has no separate "offices". Management sits out in the same room with everyone else. No reserved parking spaces.
- * The factory workers are very versatile, knowing most aspects of their area.
- * The factory workers work variable shifts, 1st, 2nd & 3rd. The factory runs 24 hours a day.
- * The chocolate coating is a different recipe for each type of candy bar.
- * M & Ms are made in Pennsylvania (shucks).

Thank-you to Jean Hoppert, our SWE host, and M&M Mars for an interesting and delicious evening.

Girls learn forces of flight at Girl Scout badge workshop

Written by Diane Peters

Do you remember the four forces of flight? 125 local Girl Scouts definitely do. On Saturday, May 31, SWE-CRS members joined with Boeing, SWE, NSBE, SHPE members from UIC, and the Girl Scouts to present a badge workshop to junior and cadette Girl Scouts. In this badge workshop, they learned about the four forces of flight. The Boeing Company championed the program and developed the training material.

The morning began with an official welcome from Joan Robinson-Berry of Boeing, the Girl Scouts, co-sponsor Caterpillar, and SWE Executive Director, Betty Shanahan, followed by a skit about the four forces of flight. Maisha Gray moderated the skit while Iris Adanuncio explained the role of Gravity, Marcia Lampela played Lift, Mayling Wong took the role of Drag, and Diane Peters was Thrust. They explained how these

forces act on an airplane, and how they have to balance properly for the plane to fly.

After learning about the forces, the girls played a game, similar to Who Wants to Be a Millionaire. Each table had a volunteer to assist with scorekeeping, and all of the tables that answered the questions correctly were entered in a drawing for prizes. Next, the girls got a chance to make their own paper airplanes. Each girl could make two planes. Then each table chose two planes; one plane that they thought would go the farthest, and the one they thought would stay in the air the longest.

After choosing their planes, the contest began to see which planes were the best. Debra Evans explained the rules and told the girls when to launch their planes. The contest was conducted in a heat format, with all of the red planes competing against each other, all of the blue planes against each other, etc. The winners from each color went into a

(Continued on page 3)



president's letter

Anne Lucietto, SWE-CRS President

A big thank you to everyone for their help and dedication throughout FY03. We've had many successful events this year, and I'm pleased to say that at this point we are looking forward to the Annual Awards Banquet at McDonald's Hamburger University Campus in Oak Brook. It's a beautiful setting, as you'll see for yourselves if you're able to come to the banquet. You won't want to miss it. Aside from honoring scholarship recipients, corporate contributors, an outstanding student section, and fellow section members, it's a great opportunity to network and socialize with those SWE friends you may not have had the chance to see for a while.

Our section's contested election went well. The simple fact that the election was contested is a positive development for the section. There have been times over the past few years when it's

been difficult to fill the slate with qualified candidates. This year we had more than enough excellent people willing to serve. This is a sign that our membership is re-vitalizing, is willing to work toward the future progress of the section, and volunteer their time. We are exceptionally proud of the fact that those candidates whose bids were unsuccessful are willing to help us out in other capacities in FY04. Many thanks to those who ran for office, those who are volunteering for committee positions next year, and those who took the time to read over the election materials and cast a vote.

As summer approaches, consider what you can do for SWE-CRS in the next fiscal year. It's the perfect time to get involved as we kick off another year. There are many opportunities and things to be done. Is there something you like

to do? If so, be sure to contact our new president, Mayling Wong, and let her know what your interests are. I'm sure she will help you find the right volunteer opportunity to match your interests.

A summary of the FY03 goals and achievements will appear in the Commemorative Issue of the newsletter, which will be the first issue of FY04. This is due to the timing of the banquet and the desire to get banquet information in the Commemorative Issue.

Again, THANK YOU for all that you have done in the quest to make the Chicago Regional Section of SWE one of the best in the nation. Your support for the projects and programs of the Section is valued more than you can imagine. My best wishes for your success in your future career endeavors.

Congratulations to FY04's officers

The FY03 Nominating Committee (Anne Lucietto, Marcia Lampela, Diane Peters and Nelly Sanchez) is pleased to announce the FY04 Officer Slate for the Chicago Regional Section of SWE!

President: Mayling Wong

Vice President: Deanna Heffron

Secretary: Lillian Chan

Treasurer: Diane LaFortune

Council of Representatives: Nicole Eigner, Debra Evans, and Wendy Landwehr

Thanks to all that participated in the election and who have agreed to take on committee positions in the next year.

Officers

President

Anne Lucietto

Vice President, Career Guidance

Mayling Wong

Secretary

Cecilia Pruteanu

Treasurer, Scholarship

Laurel Jasek

Section Representatives

Nicole Eigner

Debra Evans

Deanna Heffron

Committee Chairs

Awards

Sarah Corbin

Awards Banquet

Deanna Heffron

Bulk Mail

Lillian Chan

E-mail Network, Publicity, Webmaster

Rebecca Miller

Family Issues

Karen Preston-Wosniak

Finance Chair

Amy Theis

IEC Representative

Daryl Farley Varney

Job Opportunities

Ailissa Orozco

Membership

Diane Peters

Mentor

Sandra Bittner

Newsletter Editor

Diane LaFortune

PD Conference

Nelly Sanchez

PO Box Mail Distribution

Wendy Landwehr

Programs

Michelle Brown

Susan Mui

Student Liaison

Zenah Khawaja

Voicemail

Tracey Schocke

SWE-CRS members speak at Futures Unlimited

Written by Diane Peters

On May 16, several SWE members spoke at the Futures Unlimited Conference at Oakton Community College in Des Plaines. This conference, designed to expose eighth grade girls to science, engineering, and mathematics-based careers, is an annual event at Oakton. The 2003 event was the 11th annual conference.

In the morning, the girls went to workshops led by Oakton faculty. Some of the workshops were "The Geometry of Tiling Floors", "Making Slime", "Digging Up the Past", "Stains to Brains", and "Accounting for My Life". Overall, there were over 30 different workshops, and the girls were able to go to two of them.

In the afternoon, the girls went to the role model sessions. There were three sessions, so each girl could learn about three different careers in these sessions. SWE-CRS members Diane Peters, Christina Drouet, and Jenny Ross

were among the approximately 40 women sharing information about their engineering careers. Some of the other women were in the fields of architecture, medicine, accounting, business, aviation, and law enforcement.

After the role model sessions, the professional women were split into two groups, as were all of the girls, and there were two concurrent sessions in a press conference format. Each of the role models stood up and gave her name and profession. Then the girls had the opportunity to go up to microphones and ask a question for a specific woman, or for any woman on the stage who wanted to answer. Some of the questions were about what people liked about their careers; others asked about work-life balance; and some girls wanted to know if any of the women had trouble being taken seriously by male colleagues.

To thank the role models, after the event they were invited to a reception. At this reception, all of the women had an opportunity to socialize and network with each other.

Girls "Making it Matter" at WEPAN badge workshop

Written by Diane Peters

On Sunday, June 8, SWE-CRS teamed with WEPAN and several corporate sponsors to put on a badge workshop for junior girl scouts to earn their "Making It Matter" badge. At this event, the girls performed four different activities to learn about different fields of engineering, assisted by the volunteers.

The afternoon started with an official welcome from Anne Lucietto, President of the Chicago Section of SWE, and Jan Rinehart, the current President of WEPAN. They welcomed the girls and the volunteers, acknowledged the sponsors, and encouraged the girls to ask any of the volunteers what kind of engineering they did.

In their first activity, the girls used masking tape and paper to build paper towers. When building these structures, their goal was to build the tallest tower that would stand up without being taped to the table. After this, they rotated among three different activities. In one of these activities, the girls learned about polymers. Using the Girl Scouts/AICHE "Making it Matter" kit (supplied by Lockheed Martin), they mixed glue, water, and borax to make a polymer. After saving this polymer, they made more of it and dissolved it in vinegar. Then, they added baking soda to make a new polymer with the consistency of cottage cheese. One girl compared it to brains.

In another station, the girls learned about water. They had different materials – potting soil, coarse sand, clay, and small rocks – and poured water through each one. The object was to see how quickly the water ran through, how much of it passed through, and learn about their filtration effects in nature.

At the third station, the girls learned about electrical circuits. They used a kit (sponsored by Agilent Technologies) to wire a small LED light. This circuit board could be used as

an electronic game. Bolts were screwed on the board and connected with wires and to a battery on the back side of the board. On the front side, questions were taped next to a set of bolts on the left side of the board, and answers were taped next to another set of bolts on the right side of the board. Girls were asked to use one wire to touch the bolt next to a question and use another wire to touch the bolt next to an answer. If they answered the question correctly, the light would be lit.

Betty Preece, a member of both SWE and WEPAN who organized the event, ended the afternoon with a demonstration of how a rocket could fly using Newton's 3rd Law as the girls enjoyed Popsicles. At the end of the day, approximately 70 girls had earned their science badge.

SWE-CRS volunteers included Yolanda Matthews, Erin Matthews, Betty Shanahan, Nora Lin, Liza Pono, Kathy Cunningham, Diane Peters, Anne Lucietto, and Richard Scheffrahn.

Boeing Girl Scouts workshop(Cont.)

(Continued from page 1)

"rainbow round" to decide the best plane. The farthest plane went over 40 feet.

Joan Robinson-Berry told the girls, "You are ALL winners", so by the end of the morning, each girl had at least one prize, not just those whose planes were the best. After the formal event, the girls had an opportunity to visit booths of the event sponsors. The SWE booth featured the mementos (including space suit patches) presented to SWE by astronaut and SWE member Bonnie Dunbar.

SWE Members take a look through the window into the brain

Written by Iris Adanuncio

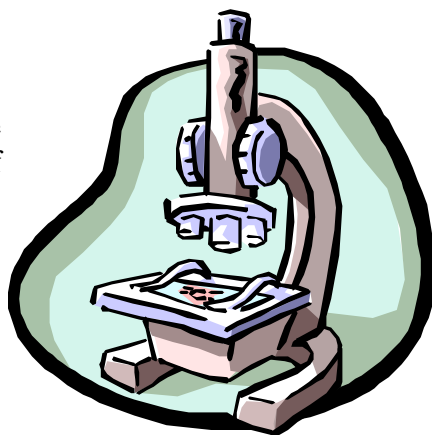
SWE-CRS, AWIS, and WBC hosted a seminar presented by Dawn C. Matthews, M.S. M. B.A on MIICRO's proprietary neuroimaging technology. The event took place on May 14th at the Northwestern University Kellogg School of Management and was suggestively named "A Window Into The Brain".

Although the audience consisted of people with different backgrounds, we were all impressed by the presentation and the vast potential of neuroimaging applications. The following topics were presented: What is FDG-PET, the OMEI™ Technology? What it can provide, why it is different, and more important, why it is the "Right Method at the Right Time"? FDG is used for drug discovery and development to get better insights into drug efficacy.

We were all impressed by MIICRO's technical advancements with these techniques and their expertise in addressing critical questions in drug development. Their purpose is to reduce drug development costs, speed new drugs to market, determine the efficiency and any adverse reactions of

new drugs and develop novel pharmaceutical leads in the central nervous system.

Many of us have been hit by the tragedy of an acquaintance suffering from Alzheimer's and Parkinson's disease, or schizophrenia. What do these diseases all have in common? There are still unanswered questions about their causes, and the existing medications do not cure them. What a difference it will make to have access to information about the effects of chemical reactions generated within the brain by optimized medication. Since the brain controls our whole existence, every medical condition is affected and reflected by cerebral activity. The audience was spellbound and the presentation inspired more questions from the participants. We all thank Dawn for her presentation, and to all the members that



made the event possible. We had the chance to see through a "Window Into The Brain", a glimpse of a happier future. The event ended with a Q&A and networking session. For those interested in more detailed information, please visit their website at www.miicro.com

Planning Retreat set for July 19

The SWE-CRS planning retreat for FY04 will be held Saturday, July 19 at Fermi National Accelerator Lab. Goals and plans for the next fiscal year will be set at this time. It will be a great chance to meet people from across the section, and you'll be able to help shape the upcoming year of SWE-CRS.

If you are interested in attending the planning retreat, please contact Mayling Wong at Mayling.Wong@swe.org. Security passes will be needed, so you must RSVP to this event.



New benefit for SWE members

Written by Betty Shanahan and Sharon Bennett

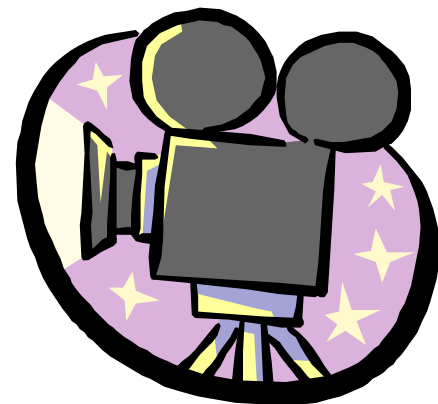
The Society of Women Engineers, in partnership with Met Life Financial Services, is pleased to announce a new benefit for SWE members and their families. Met Life has been approved to be the sole provider of Long Term Care insurance for SWE. Met Life is experienced in this field and committed to it for the future.

This program is being extended to members and their immediate families at a savings and with simplified underwriting.

Information meetings are being planned. For more information please contact your fellow SWE member and Met Life associate, Laurel Jasek at (630) 810-0346 x117 or (630) 640-2315.

The Chicago Regional Section is the first section to be offered this opportunity.

movie reviews



Winged Migration soars above the rest

Written by Rebecca Miller

Winged Migration is a film about the journey of migratory birds. It is not about facts, other than the distances some birds migrate, but about appreciating the beauty of flight and the amazing travels these birds partake to survive. The movie follows a dozen or so birds, across the seven continents, with the camera appearing just off the wings of the migrating birds. No camera tricks here - only gliders, helicopters or hot-air balloons riding alongside the birds, some of which were trained from birth to tolerate the camera and noise. This movie takes the viewer along with birds such as geese, eagles, cranes and terns as they fly from their northern breeding grounds - south - and then back north again - with some traveling up to 12,000 miles one-way. You see territorial displays, mating rituals and the babies that result. You also see the natural and man-made dangers these birds face. The movie is bittersweet in that one moment you are cheering for the ducks that have made it to their destination after flying exhaustingly for days, only to find in the next moment those same ducks being shot down by hunters.

This movie has very little narrative and took four years to make and is a must-see for any nature lover, especially any bird lover or one amazed with the beauty of flight. Some of the scenery is simply breathtaking. Winged Migration is only showing in three area theaters - Evanston, Highland Park and Chicago, but if it is still playing after this newsletter goes to print, it is worth the trip. Visit www.wingedmigration.com for more information about bird migration or the making of this film.

Bend it Like Beckham gets you pumped

Written by Diane LaFortune

David Beckham, star player for the Manchester United, is the world's most popular sports figure, and his ability to curve the soccer ball into the top corner of the net is legendary. Jess Bhamra, an Indian girl living in London who loves playing soccer with her friends, gets noticed by Jules Paxton one day while playing. Jess tries out and makes it onto the team the Jules plays on, but Jess's parents have other ideas. They want her to lead a traditional Indian life, but Jess would rather live her dreams and play soccer with Beckham.

This movie is inspirational. You'll walk out of the movie feeling pumped, and ready to tackle anything. The women in this movie are trying to overcome the stereotypical images of what women are supposed to act like. Sometimes, it sounds a lot like engineering.

You don't need to like, love, or understand soccer to understand this movie. The humor in this movie will have you on the floor laughing.

Bend it Like Beckham is rated PG-13, and is probably appropriate for pre-teens and older (but not having kids, you might want to see it first before trusting me on that one). I highly recommend bringing the whole family to this movie. You'll have a great time.

New members join SWE-CRS

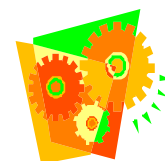
Please welcome the following members to SWE-CRS who have recently joined SWE or transferred from another section.

Iris Adanuncio
Wendy Kuo
Yuhua Liu
Patrice Y. Tolliver
Alan R. Wera
Cynethie Y. Wheeler
Lynn C. Whitman

All members are encouraged to submit articles or announcements that may be of interest to our membership. The next article deadline is

July 11th

Send articles to:
Diane.LaFortune@ngc.com
SWE CRS Newsletter Editor





SOCIETY OF WOMEN ENGINEERS
 Chicago Regional Section
 P.O. Box 95525
 Palatine, IL 60095-0525

FIRST CLASS MAIL
 U.S. POSTAGE PAID
 SCHAUMBURG, IL
 60196
 PERMIT NO. 529

Forwarding Service Requested

Mailing Label Here

contents

1	M&M Mars Tour	WEPAN Badge Workshop	3
1	Boeing Badge Workshop	Window into the Brain	4
2	President's Letter	Planning Retreat	4
2	FY04 Officers	New SWE Benefit	4
3	Futures Unlimited	Movie Reviews	5

Printing and mailing of this newsletter are generously supported by:

NORTHROP GRUMMAN