

## SWE Officers

2011-2012

### President

Julie Millhollin  
U.S. Army Corps of Engineers  
(319) 794-5439  
[Julie.L.Milhollin@usace.army.mil](mailto:Julie.L.Milhollin@usace.army.mil)

### Vice President

Sunny Hubner  
John Deere Harvester Works  
[HubnerSunnyJ@JohnDeere.com](mailto:HubnerSunnyJ@JohnDeere.com)

### Secretary

Heather Kalkhoff  
John Deere Davenport Works  
[KalkhoffHeatherM@JohnDeere.com](mailto:KalkhoffHeatherM@JohnDeere.com)

### Treasurer

Renee Mance  
John Deere Harvester Works  
[ManceReneeE@JohnDeere.com](mailto:ManceReneeE@JohnDeere.com)

### Section Representative

Nancy Shell  
Stanley Consultants, Inc.  
(563) 264-6428  
[shellnancy@stanleygroup.com](mailto:shellnancy@stanleygroup.com)

### Alternate Section Representative

Paula Raney  
[pirtiny@aol.com](mailto:pirtiny@aol.com)

### QCESC Representative

Laura Schinke  
John Deere Harvester Works  
[SchinkeLauraM@JohnDeere.com](mailto:SchinkeLauraM@JohnDeere.com)

### Outreach Coordinator

Megan Mason  
John Deere Harvester Works  
[MasonMeganC@JohnDeere.com](mailto:MasonMeganC@JohnDeere.com)

### Webmaster

Angel Jacobs  
Jacob & Hefner  
(309) 757-1900  
[ajacobs@jacobandhefner.com](mailto:ajacobs@jacobandhefner.com)

### Scholarship Chair

Brenda Frye  
HON Company  
[FryeB@honcompany.com](mailto:FryeB@honcompany.com)

### Project Lead the Way Rep

Donna Jones  
U.S. Army Corps of Engineers  
(309) 794-5371  
[Donna.M.Jones@usace.army.mil](mailto:Donna.M.Jones@usace.army.mil)

Wow did this summer go fast! I can't believe it is time to send the kids back to school and start the new SWE 2011-2012 year.

Congrats to *Melody Mendez* for being the 2011 Quad Cities/Muscatine Section Scholarship winner. Ms. Mendez attended our July 12<sup>th</sup> planning meeting to receive her certificate from the cabinet. Way to go!

This year will be busy. Our section is going to host the 2<sup>nd</sup> Iowa SWE Conference in April. Planning this conference has begun. If you are looking to get involved this is a great opportunity. There is a lot to do! Please contact Paula Raney to see how you can help!

I hope you all will mark your calendars and plan to attend one of our meetings this year (see page 4). These meetings are great place to meet new people and share experiences. Don't forget to invite the new engineers from your office.

Our first meeting of this year is going to be Tuesday September 27<sup>th</sup> at 6:00 pm at the lodge in the Saulsbury Bridge Recreation Area. We will have a nature walk followed up with a pot luck dinner. I cannot wait.

See you at the next meeting,

*Julie*

Julie Millhollin  
President

# September SWE Meeting

## Saulsbury Bridge Recreation Area Nature Walk

Tuesday, September 27

Plan to join us for a nature walk with Naturalist/Ranger Dave Bakke near the beautiful Cedar River. The area was named after the Saulsbury Bridge which crossed the Cedar River at this site. The bridge was used from 1881 until 1967, and was destroyed by fire in 1977. We will be following our nature walk with a potluck supper and business meeting in the Saulsbury Lodge. The Saulsbury Lodge is an enclosed lodge situated near the Cedar River at the foot of the old Saulsbury Bridge. The lodge will offer us all the amenities needed: kitchen, tables and chairs, restrooms, and protection from the weather if needed.

When: Tuesday, September 27, 2011

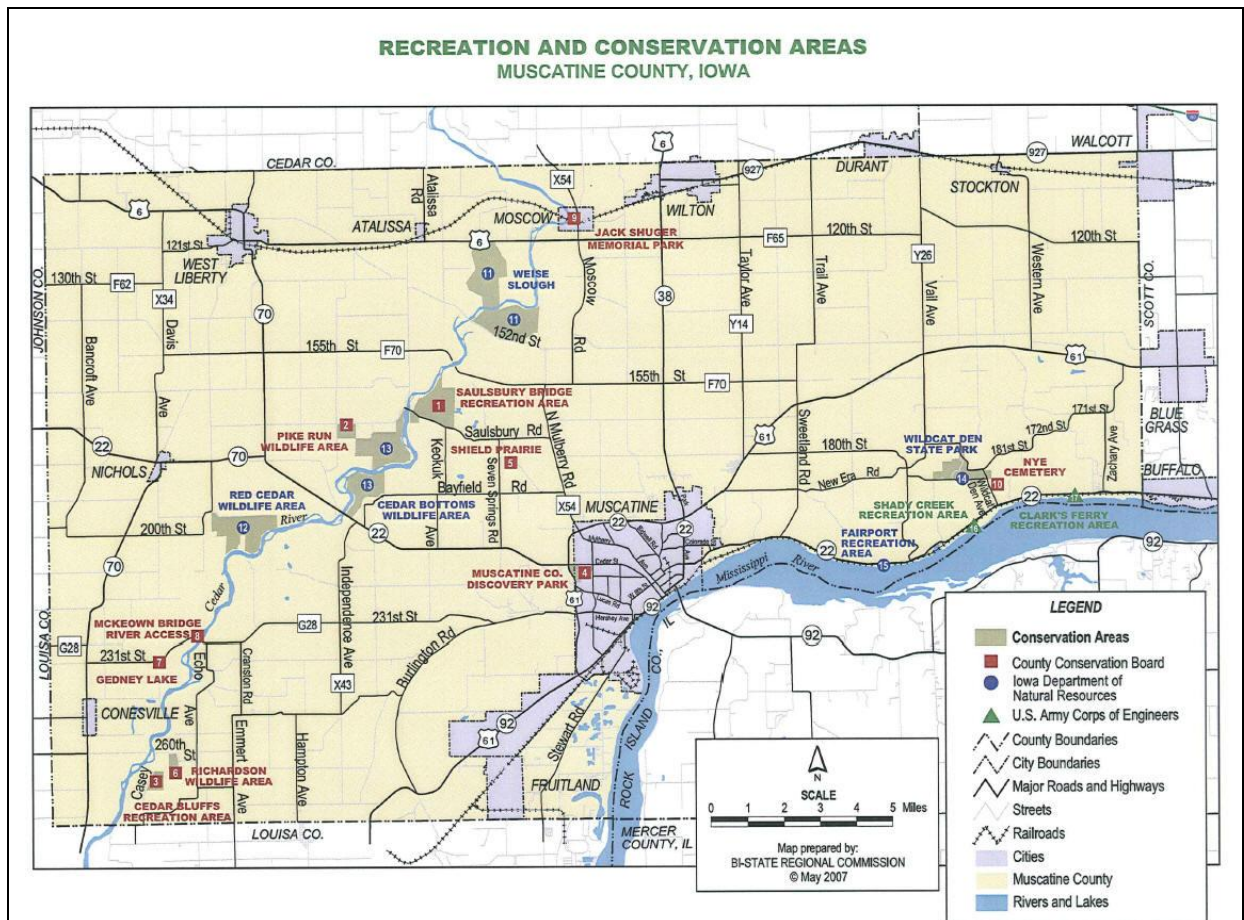
Time: 6pm

Place: Saulsbury Lodge, Saulsbury Bridge Recreation Area, 5 miles west of Muscatine, IA

Cost: None

Food: Fried chicken, drinks and table service will be provided. Please bring a covered dish to share.

Directions: Turn north (right) on North Mulberry Road from the Highway 61 bypass around Muscatine. Turn west (left) on Saulsbury Road. Drive to the end of Saulsbury Road and park near the Saulsbury Lodge (see map).



---

## Fall Flower Sales

We are doing our annual flower sales this fall with a twist. This year we are including the option to place your order online. To do so, please follow the link below.

[http://www.flowerpowerfundraising.com/campaign?campaign\\_id=8398](http://www.flowerpowerfundraising.com/campaign?campaign_id=8398)

If you would prefer to place an order and have the flowers delivered to you at the meetings with no shipping charge, then follow the link, write down what you want, and email your order to Angel Jacobs at [jacobsangelm@gmail.com](mailto:jacobsangelm@gmail.com). Send a check for the amount due without the \$5 shipping and handling fee.

Mail check to  
QC-Muscatine SWE  
Box 235  
Bettendorf, IA 52722

---

## Region H Announcements

### Survey - CEU program at Region Conference

Region H is discussing the feasibility of providing a CEU course for the 2012 Region H conference. The program would be an additional charge. This survey is designed to assess member interest. Responses are appreciated. The survey can be accessed at:

<http://www.surveymonkey.com/s/7SMXDBR>

---

## Hockey Night in the Quad Cities: Tuesday, 15 November

ASM International is inviting SWE to join in *Hockey Night in the Quad Cities* on Tuesday, 15 November. The event will be held at Johnny's Italian Steakhouse (Metro Room) and at the i-Wireless Center. Feel welcome to invite family, friends, co-workers, suppliers, etc.



### Event Agenda

- 4:45 - 5:30PM Networking / Socializing Session @ Metro Room (Johnny's)
- 5:30 - 5:35PM Welcome from Mallard Management
- 5:35 - 6:10PM Speaker
- 6:10 - 7:05PM Dinner – Buffet Style
- 7:05 - 9:30PM Game "Quad City Flames vs. Bloomington Prairie Thunder"

*Cost:* \$18 (includes dinner, speaker, hockey ticket, prizes) or \$12 (dinner & speaker only) or \$6 (speaker only).

*Registration & Pre-Payment: by Tuesday, 8 November, 2011*

- Make check payable to 'ASM International' (\$6 deduction for ASM member)
  - Mail payment and registration info (Name, Company, Phone, Email, Society) to Barry Murchie, QET Consultants, PO Box 353, Bettendorf, Iowa 52722 (Attn: ASM)  
Email: [BTMurchieQET@yahoo.com](mailto:BTMurchieQET@yahoo.com)  
Phone: (563)359-7771
- 

### Lectures at St. Ambrose: Speaker Henry Petroski

*How History Can Help Engineering: From Failure to Success to Failure in One Century*

Friday, 30 September at 12PM

Rogalski Center Ballroom, St. Ambrose University

*Engineers Improving Our Lives: Great Achievements of the 20<sup>th</sup> Century*

Friday, 30 September at 10AM

Rogalski Center Ballroom, St. Ambrose University

---

### SWE 2011-2012 Meeting Schedule

October - Wine tasting, Quad Cities

November - Holiday Craft Workshop, Quad Cities

January - Financial Speaker, Stanley Auditorium, Muscatine

February - Blackhawk Hotel tour, Quad Cities

March - Postal Distribution Center tour, Quad Cities

April - Muscatine Art Center, speaker, Muscatine

May - Bowling, Quad Cities

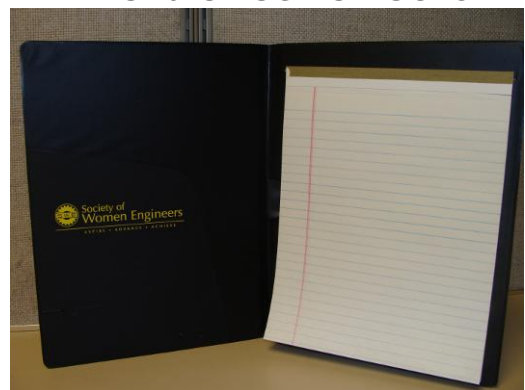
---

### Membership info:

You can join SWE on the web. Go to <http://www.swe.org/membership>. Follow the easy instructions from there to join or renew your membership. Forms can either be printed or you can join online. The Online Application for new members will take you approximately 20 minutes to fill out. Keep in mind that many companies will pay dues for professional organizations, so be sure to ask!

Once you are a SWE member, you will then be able to log into the member directory to update your registration and search for other SWE member contact information. You will be helping not only yourself, the regional organization and the national organization, but you will also be helping our section. Twenty percent of the funds come back to our section.

### SWE Portfolios for Sale:



Cost is \$10 each; they are available at meetings and through Renee Mance  
[ManceReneeE@JohnDeere.com](mailto:ManceReneeE@JohnDeere.com)