



Society of
Women Engineers

ASPIRE • ADVANCE • ACHIEVE

Escape to ABJ!

August 14-16th, 2009

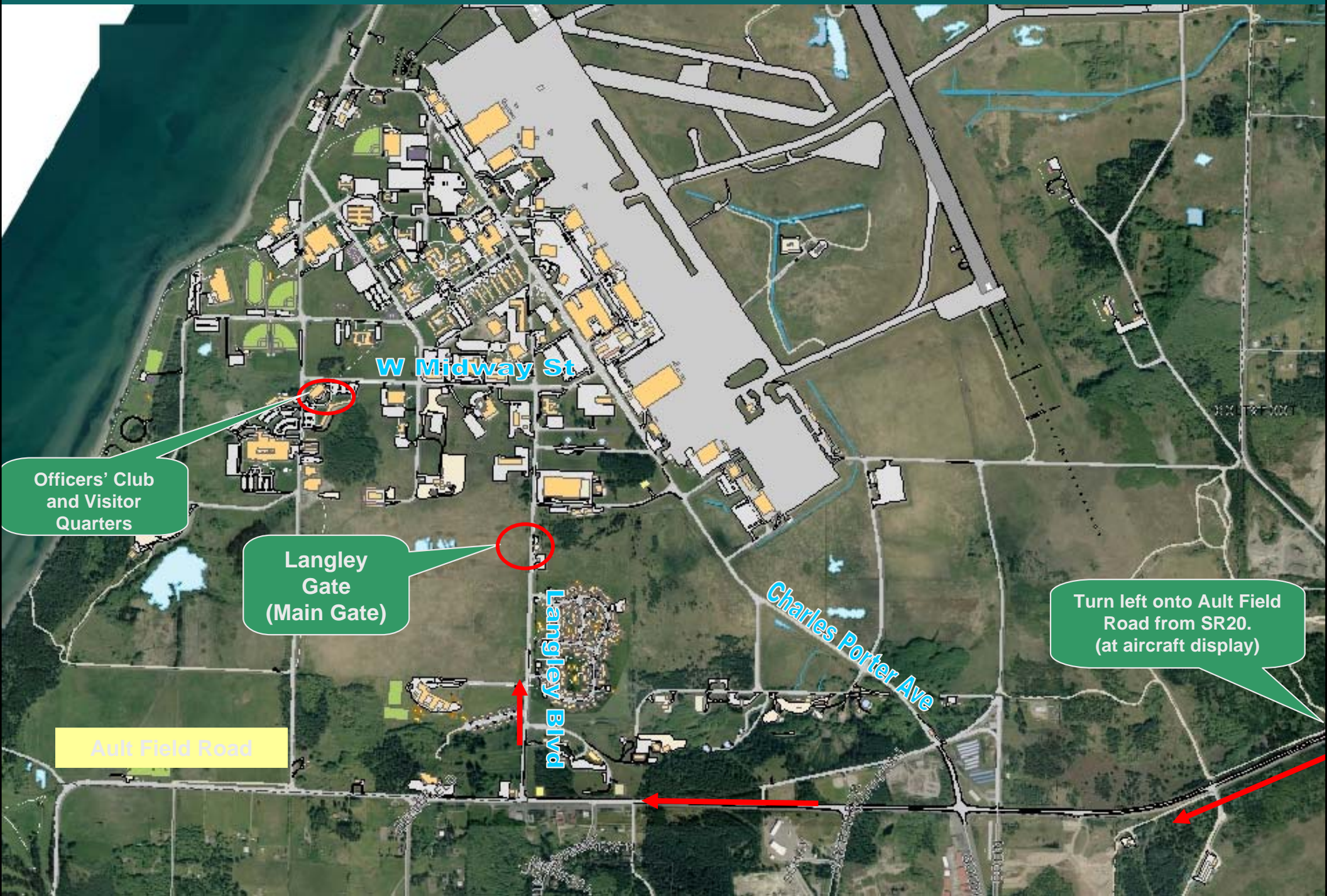
Whidbey Island Whidbey Island

Conference & Catering

Overlooking the beautiful San Juan Islands and Strait of Juan De Fuca, Whidbey Island offers wonderful indoor and outdoor settings including two large ballrooms and several small gathering or breakout rooms suitable for our event.

Entertainment options

- ◆ Restaurants & Bars
- ◆ Fitness center, steam room & sauna
- ◆ Paintball
- ◆ 18-hole golf course with practice facilities
- ◆ Theater
- ◆ Bowling
- ◆ Game room with darts, electronic games and pool



Officers' Club and Visitor Quarters

Langley Gate (Main Gate)

Turn left onto Ault Field Road from SR20. (at aircraft display)

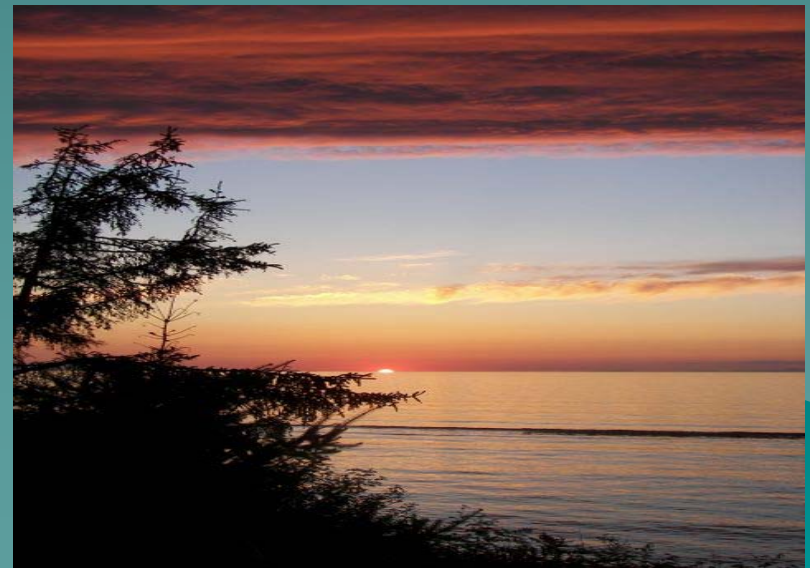
Ault Field Road

W Midway St

Langley Blvd

Charles Porter Ave

Breathtaking views from Whidbey Island



Navy Gateway Inns & Suites
... Quality rooms & suites at low
rates



The beach, bowling, paintball ...

There will be Posted activities to choose from



Views from the Gallery Golf Course



Navy Gateway Inns & Suites

- ◆ Standard Room (Queen bed) **\$175 all inclusive**
 - ◆ Suites (Queen bed, two rooms) **\$205 all inclusive**
 - ◆ VIP Suites (limited availability) **\$245 all inclusive**
-
-

What is all inclusive?

- ◆ Friday night Kick-Off Social
 - Includes Food
 - No host bar (self funded beverages)
- ◆ Friday night hotel stay
- ◆ Saturday Breakfast Bar
- ◆ Saturday's Keynote Lunch
- ◆ Saturday Evening Social
 - Event details TBD
- ◆ Saturday night hotel stay
- ◆ Sunday Breakfast Bar
- ◆ Sunday A, B, & J Break out sessions

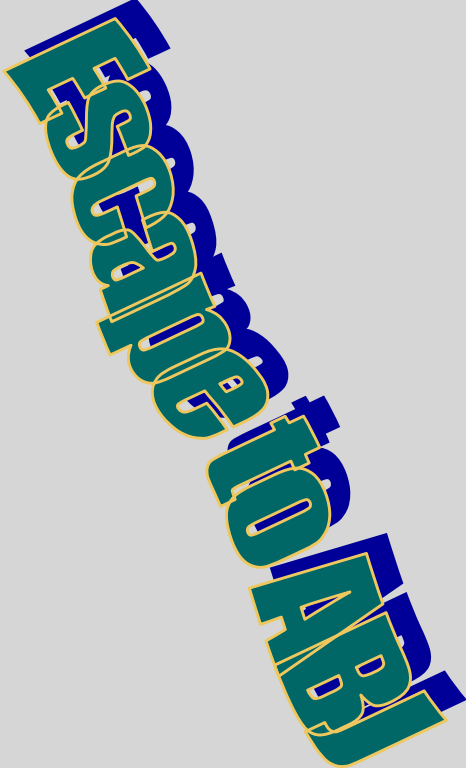
Room Features:

- ◆ Free Wi-Fi access
- ◆ Microwave and Refrigerator
- ◆ Coffee pot
- ◆ Hair dryer
- ◆ On-site workout room
- ◆ Smoke free facility
- ◆ ADA compliant rooms

Entertainment:

- ◆ Bowling Alley Across the Street
- ◆ Kegler's & Back Alley Bar
 - Food, Beverages, Billiards & Air Hockey

Schedule

	Friday, August 14 th	Saturday, August 15 th	Sunday, August 16 th	
TIME	Location	Location	Location	
8:00-9:00		Breakfast	Breakfast	
9:00-9:30			Regional Meetings	
9:30-10:30				
10:30-10:45			Break	
10:45-11:15				
11:15-11:45			Regional Meeting	
11:45-1:15			Lunch	Hotel Check-Out (timing: TBD)
1:15-1:45				
1:45-2:15				
2:15-2:30			Break	
2:30-3:00				
3:00-3:30				
3:30-3:45			Break	
3:45-4:15				
4:15-4:45				
4:45-5:00			Closing Statements	
5:00-6:00		Happy Hour / Social (Food) No Host Bar	<Social & Dinner Options> TBD	
6:00-7:00				
7:00-Midnight	Cosmic Bowling \$10 self pay (includes shoes and all you can bowl)	Cosmic Bowling \$10 self pay (includes shoes and all you can bowl)		

Transportation

Two shuttle companies serve Whidbey Island

- ◆ The Whidbey-SeaTac Shuttle (<http://www.seatacshuttle.com/>) provides service from Whidbey Island to SeaTac International Airport.
 - The trip to SeaTac Airport takes 2 hours and 15 minutes from downtown Oak Harbor
 - Whidbey Sea-Tac Shuttle travels on the Clinton/Mukilteo Ferry and has “first-on/first-off” priority boarding just like vanpools and carpools to ensure on-time arrivals at SeaTac Airport. For schedule and advance reservation, call 360-679-4003 or toll free 1-877-679-4003.
- ◆ The Airporter Shuttle (<http://www.bellaaircharters.com>)
 - Looking to schedule one pick up time that might best meet the needs for those arriving Friday afternoon (TBD)
- ◆ Other: TBD

http://www.seatacshuttle.com			
Oak Harbor (NAS Whidbey)	Adult	\$36.00	\$64.00
	Military	\$32.00	\$56.00
	Senior	\$32.00	\$56.00

http://www.		

Back-up

Further information



What is the Value?

- ◆ 2 nights hotel cost out of pocket?
 - \$100 a night? (\$200)
- ◆ Social Event on Friday night
 - \$25
- ◆ Saturday
 - Traditionally runs around
- ◆ Saturday Night Dinner
 - \$25 ???

$$\text{> } \$100 \times 2 = \$200$$

$$\text{> } \$ 25$$

$$\text{> } \$ 35$$

$$\text{> } \$ 25$$

\$285

That's \$100
savings!

*This is only an example - personally in the past I have spent more than this. * Aug 2009 ABJ for \$175!!!**