



SOCIETY OF WOMEN ENGINEERS HARTFORD SECTION NEWSLETTER

www.swe.org/RegionF/sections/Hartford

FY10 ISSUE 2

AUGUST/SEPTEMBER 2009

FY10 SECTION OFFICERS

President

Michelle Montepara
Sikorsky Aircraft
mmontepara@gmail.com

Vice President

Ashley Phillips
Pratt & Whitney
ashley.phillips@swe.org

Secretary

Teresa Amaducci
Pratt & Whitney
teresa.amaducci@swe.org

Treasurer

Carol Coppa
Northeast Utilities
coppaca@nu.com

COR Representative

Christine Lagree
Hallmark
christine.lagree@gmail.com

Outreach Chair

Sarah Koenig
Pratt & Whitney
sarah.koenig@pw.utc.com

Scholarship Chair

Suzanne Woll
Hamilton Sundstrand
suzanne.woll@hs.utc.com

Certificate of Merit

Claudette Hickey
IBM
cpetroze@us.ibm.com

Membership/Publicity

Amy Kokoski
Axinn, Veltrop & Harkrider
amy.kokoski@gmail.com

Awards Chair

Stephanie Gagliardi
QuEST
stephanie.l.gagliardi@gmail.com

Newsletter Editor

Ashley Phillips
ashley.phillips@swe.org

ANNUAL SWE HARTFORD KICKOFF MEETING SAVE THE DATE!

SEPTEMBER 29TH, 2009

6-9 PM

DAKOTA STEAKHOUSE, ROCKY HILL, CT

Please save the date for our annual kickoff meet and greet at Dakota Steakhouse. Stay tuned for more information and registration via email. See inside for more details and information.

If you have any questions regarding the event, please contact Ashley (ashley.phillips@swe.org).

The Society of Women Engineers (SWE) is a not-for-profit educational and service organization that empowers women to succeed and advance in the field of engineering, and to be recognized for their life-changing contributions as engineers and leaders. Founded in 1950, SWE is the driving force that establishes engineering as a highly desirable career for women through an exciting array of training and development programs, networking opportunities, scholarships, outreach and advocacy activities, and much more.

SWE Hartford has a new **Google Calendar!** If you are interested in adding our calendar to yours, please click here :

http://www.google.com/calendar/embed?src=j3t9ohduhvl3fehdqb4h98m9fg%40group.calendar.google.com&ctz=America/New_York or by using the calendar search function look for "SWE Hartford"

If you are interested in helping coordinate an event, have an idea for an event, or a newsletter submission please contact:

Michelle (mmontepara@gmail.com) or Ashley (ashley.phillips@swe.org)

Remember to check the website: <http://www.swe.org/RegionF/sections/hartford/>

The Hartford Section is a member of the SWE New England Region, Region F.
<http://www.swe.org/regionf/>



Society of
Women Engineers

ASPIRE • ADVANCE • ACHIEVE

IN THIS ISSUE:

Save the Date	1	Upcoming Events	3
President's Note	2	Webinar	4
		Member Information	5

FROM THE DESK OF THE PRESIDENT

HELLO COLLEAGUES & FRIENDS,

We have literally been thrown into fall! The nighttime temperatures are dropping and school is back in session! For the first time in 21 years, I am not going back to school in September! While this is somewhat of a relief, I also feel a bit anxious about what I should do next. For now, I plan to take a Process Certification course to learn how to implement process control for manufacturing processes. I encourage you to consider your current path and think about how to advance your opportunities through training and further education!



The picture above was taken in Pompeii earlier this month. What an experience! I was overwhelmed by the beauty of this preserved historical city. Look for a future article from me describing my journey as well as some recommendations for future travelers to Italy!

Your SWE Hartford leadership has already received a few emails with suggestions for speakers, different meeting ideas, as well as suggestions for newsletter articles. Keep them coming! We appreciate this feedback and the growth of this section depends on this member involvement. Your contributions to our SWE community enrich all of us.

We are going to be hosting a kick off event again this year. In light of these difficult economic times, SWE Hartford will be subsidizing a portion of everyone's entrance fee.

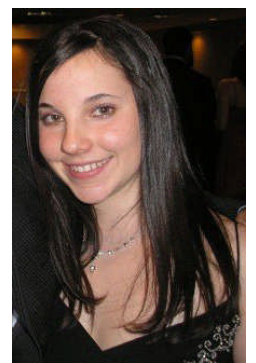
I hope you can bring your energy to our meetings and events. I look forward to seeing you soon! Contact me any time with questions at mmontepara@gmail.com

Michelle Montepara

SWE Hartford 2009 President

WELCOME TO OUR NEW AWARDS CHAIR:

Stephanie Gagliardi is from East Haven, CT and graduated in May 2009 from the University of Connecticut with a B.S. in Materials Science and Engineering. She is currently employed by Quality Engineering & Software Technologies (QuEST) in East Hartford, where she is an Associate Project Engineer working on F135 cost reduction at Pratt and Whitney's CAN module center. Stephanie was an active member of the UConn SWE chapter from Fall 2005-Spring 2009, where she served on the executive board as Public Relations Chair 2006-2007, and Social Chair 2007-2008. Throughout college Stephanie was also involved in many other organizations, including Engineering Student Leadership Council, where she served as Secretary and often SWE Representative. She is also a member of Phi Sigma Rho, national sorority for women in engineering, where she served as SWE Representative from 2007-2009, and facilitated joint programming between SWE and Phi Rho. Currently she is a Daisy Girl Scout leader in East Haven. In her spare time she enjoys Zumba, country music, reading, watching television and movies, and is training for a 5K. She hopes to eventually pursue a master's degree in Materials Science and Engineering, as well as potentially earning a master's degree in education to teach high school math or chemistry.



UPCOMING SWE HARTFORD EVENTS

SWE Hartford Annual Open House & Networking Night

Tuesday, September 29th, 2009

Beginning at 6 PM

Dakota Steakhouse, Rocky Hill (www.dakotarockyhill.com)

Cost: \$15 SWE Members, \$20 Non-Members / Cash Bar

To Register, email Ashley (asbley.phillips@swe.org) by September 21st

Join us for our annual kickoff for SWE Hartford. This exciting evening consists of hors d'oeuvres, networking, friends, raffles and a few other surprises! Come meet the new executive board members and see what SWE Hartford has in store for FY09.

There's something for everyone:

Already a Member? Meet your fellow SWE Hartford members and network with other local professionals. Find out what events are planned for FY08 and how you can be more involved. Bring a co-worker or friend and introduce them to SWE!

Recent College Graduate? Find out about transitioning to and the benefits of SWE professional membership. Learn how you can get more involved with your local SWE section!

Collegiate Member? Discover how SWE Hartford can partner with your collegiate section, and how the professional section can enhance your SWE experience!

Not yet a Member? Network with other local professionals and find out how SWE Hartford and its resources can help your career or business. Learn about the benefits of SWE membership!

Member of Another Professional Society? See how your professional section can team with SWE Hartford to host exciting and dynamic events!

From a Local Business, School or Community Organization? Find out how you can support SWE Hartford and help advance its mission to promote women in engineering!

LOCAL EVENTS

SOCIETY OF HISPANIC PROFESSIONAL ENGINEERS (SHPE) EVENT

Alden Davis Presents... STAR POWER—Thriving in Uncertain Times, Selling "You, Inc."

Tuesday, September 22nd, 2009

Westinghouse, 20 International Drive, Windsor, CT 06095

5:30-7:30 PM

Do you find yourself wondering how to make career decisions in this economic environment? Ever feel like your life is on "hold"? Would you like to stay vibrant and feel encouraged? STAR POWER is an integrated five-point model designed to get you into Action. Attitude, Appearance, Abilities, Associations and Accountability are woven together into "You, Inc."

Space is limited - Register Now! <http://starpowershpect.eventbrite.com>

SWE WEB SEMINAR
VALUES-BASED LEADERSHIP, LEADING WITH R.E.S.P.E.C.T.™ PART 1

Monday, September 14th, 2009

5:00PM - 6:00PM (EDT)

Registration Fees: Member - Free, Non-member - \$49

Who should take this Webinar: Managers and Experienced Professionals

About the Webinar Series:

Values-Based Leadership - Leading With R.E.S.P.E.C.T. webinar series is designed to help leaders at all levels remove old personal barriers and uncover and develop previously hidden strengths. Using the principles of R.E.S.P.E.C.T. that are at the essence of values-based leadership, participants will discover how becoming more proficient at Responsiveness, Empathy, Service, Perspectives, Self Esteem, Courage and Truth-telling will transform the way they lead, the relationships they create, and the results they produce.

About Part 1:

In Part I, we begin with an introductory discussion to realize how values-based leadership is an essential means to effectively manage people. The focus of the webinar will be on "responsiveness" and "empathy."

Responsiveness: We begin the discoveries within the R.E.S.P.E.C.T. curriculum by covering responsiveness and empathy. With the first segment devoted to responsiveness, there will be discussion about the negative or positive impact on staff of being either non-responsive or responsive managers. We go through a "Values Clarification" process; understanding what motivates people and how responding situationally to each team member's known values produces the results you want.

Empathy: During the 2nd segment of the webinar we will focus on empathy. We will discuss how relating to other's situations powerfully transforms relationship-building. We run through a short introduction to the four behavioral styles with regard to empathetic exchanges.

[REGISTER NOW!](#) *(Replays of all live web seminars are available within 48 hours)*

Registration Instructions: *Once you log into your SWE account page, go to "Register for Events" and select the September 14th event. If you are a non-member then you must create a profile and login prior to registering for the Webinar event. Once you complete your registration a confirmation will be emailed to you. A link to the Webinar event will be available in the "Access Your Webinars" area of your SWE account page. Too busy to watch it live? Register now and you will receive a link for the replay within 48 hours of the broadcast. You can replay SWE web seminars 24/7, at your convenience.*

Learning Objectives:

- Deepen awareness about the negative or positive impact on staff of being either non-responsive or responsive managers.
- To understand how relating to other's situations powerfully transforms relationship-building.

About the Instructor:

Jim Hornickel is Director of Training and Development at Bold New Directions and brings more than 20 years of extraordinary professional and personal experience in leadership, management, coaching, training and transformational self-growth to his service. He has worked in small and large businesses, profit and non-profit, union and non-union environments. Jim has also started and successfully run three businesses. Jim's passion is to inspire people to take bold new directions in their lives forever increasing personal fulfillment and professional success. Jim's formal education includes a B. A. in management from the University of Massachusetts in Amherst. His advanced certificates and studies in leadership, training, coaching, counseling and mediation bring a wealth of integrated value.

UPCOMING WEBINARS THIS FALL:

- Part 2 of the Values Based Leadership series on September 21st @ 5PM EDT
- Part 3 of the Values Based Leadership series on September 28th @ 5PM EDT
- Little Things Mean a Lot: Microinequities to Micro-Affirmations on September 30th @ 2PM EDT

MEMBER INFORMATION

FY10 EXECUTIVE BOARD PLANNING MEETING

In August, the executive board and a representative from SHPE-CT met at Bertuccis in West Hartford for our annual planning meeting. It was a great way for the new members of the board to connect with senior members and to learn more about the Hartford section.

During the meeting, there was brainstorming for this year's events. Some of these ideas were more technical tours, a wine tour of the CT wine trails, quarterly SWEet events, a hibachi dinner, and Resume Workshops. If you have more ideas or any feedback from past events, please contact Ashley (ashley.phillips@swe.org) or Michelle (mmontepara@gmail.com).

CONGRATS!

Congratulations to Michelle Montepara for Graduating with her Masters in Engineering from Purdue University in June.

SUMMER BOOK REVIEW

“Barbie and Ruth: The Story of the World's Most Famous Doll and the Woman Who Created Her”
by Robin Gerber, Feb 2009

This is one story of Ruth Handler and how she grew three businesses spanning from World War II through the 1970s, during a time when women didn't have many options. The first business one was decorative products out of a new plastic on the market after World War II called Lucite. The second one evolved into Mattel toys, named after a business partner Matthew and her husband Elliott. The Barbie doll evolved from observations by Ruth that her little girl Barbara and her friends pretended their paper dolls were adults, rather than pretending the dolls were girls. After Ruth left Mattel, she began manufacturing products for survivors of breast cancer. She herself was a breast cancer survivor and used her personal experiences to design the products, locate supportive physicians, and market the products. If you are interested in product development, market analysis, and stories about growing a business, this is an interesting read.

~Sherisse Hughes



CALLING ALL **SUMMER** ARTICLES AND PICTURES!

The SWE Hartford Newsletter is always looking for new and interesting material for its pages.

Do you have any updates from a fun summer trip or a new book or hobby? We'd like to share pictures and stories with our members!

Email Ashley with information or questions: Ashley.Phillips@swe.org.

October Newsletter Deadline: **September 28th!**