



SOCIETY OF WOMEN ENGINEERS HARTFORD SECTION NEWSLETTER

www.swe.org/RegionF/sections/Hartford

FY10 ISSUE 1

JULY 2009

FY10 SECTION OFFICERS

President

Michelle Montepara
Sikorsky Aircraft
michelle.montepara@swe.org

Vice President

Ashley Phillips
Pratt & Whitney
ashley.phillips@swe.org

Secretary

Teresa Amaducci
Pratt & Whitney
Teresa.Amaducci@swe.org

Treasurer

Carol Coppa
Northeast Utilities
coppaca@nu.com

COR Representative

Christine Lagree
Hallmark
christine.lagree@gmail.com

Outreach Chair

Sarah Koenig
Pratt & Whitney
sarah.koenig@pw.utc.com

Scholarship Chair

Suzanne Woll
Hamilton Sundstrand
suzanne.woll@hs.utc.com

Certificate of Merit

Claudette Hickey
IBM
cpetroze@us.ibm.com

Membership/Publicity

Amy Kokoski
Axinn, Veltrop & Harkrider
amy.kokoski@gmail.com

Newsletter Editor

Ashley Phillips
Pratt & Whitney
ashley.phillips@swe.org

WELCOME TO FY10 SAVE THE DATE!

We will have our annual planning meeting in August. Please let us know if you have any suggestions or ideas for events or if you have any feedback regarding events from this year.

In September, we will hold our annual membership networking event. We've had great fun at both Dakota Steakhouse and Kyoto Japanese Steakhouse in the past. This is a great opportunity for new members, old members, and friends to meet, mingle and network! If you have any questions in the meantime, please contact Michelle (michelle.montepara@swe.org).

The Society of Women Engineers (SWE) is a not-for-profit educational and service organization that empowers women to succeed and advance in the field of engineering, and to be recognized for their life-changing contributions as engineers and leaders. Founded in 1950, SWE is the driving force that establishes engineering as a highly desirable career for women through an exciting array of training and development programs, networking opportunities, scholarships, outreach and advocacy activities, and much more.

If you are interested in helping coordinate an event, have an idea for an event, or a newsletter submission please contact: Michelle (michelle.montepara@swe.org) or Ashley (ashley.phillips@swe.org)

Remember to check the website for more information!
<http://www.swe.org/RegionF/sections/hartford/>

The Hartford Section is a member of the SWE New England Region, Region F. <http://www.swe.org/regionf/>



Society of
Women Engineers

ASPIRE • ADVANCE • ACHIEVE

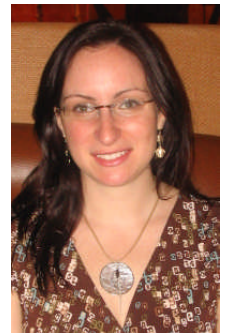
IN THIS ISSUE:

Save the Date	1	FY10 Executive Board	3-4
President's Note	2		

FROM THE DESK OF THE PRESIDENT

HELLO COLLEAGUES & FRIENDS,

I am honored you have put your trust in me to serve as this year's SWE Hartford President. We are so fortunate that Liz Garypie set the foundation for this year's Executive Board to build upon. Her leadership enabled the section to "push the envelope" over the last two years, with improved programming and more opportunities for networking than ever before.



My goals for the section are simple and I hope that you will provide your thoughts to me and our Executive Board about this plan.

Increase value of SWE membership

You pay dues each year, you should get something out of that investment! We will work hard to provide opportunities for networking and professional development that will be too good to refuse!

Less Communication is More

This means clearer, more concise communication. In our world, where emails fly far too often (55 billion e-mails are sent daily, not including spam, according to a 2008 study by the Radicati Group), SWE Hartford will strive to be more efficient in its communication. Our newsletter has transformed over the last year due to the hard work of editor, Ashley Phillips. Be on the lookout for more changes and let her know if you have suggestions!

Targeted Programming

To plan an event takes time, energy and money. SWE Hartford will continue to co-host events with other societies and groups to enhance your experience as a participant and provide a more diverse networking scene.

I hope you will choose to get involved in 2009, whether it is taking on a leadership challenge, attending an event to learn a new skill or making contacts in preparation for a career change. Please contact me any time with suggestions for the section's success!

Michelle Montepara

SWE Hartford 2009 President
mmontepara@sikorsky.com

FY 10 - OPEN COMMITTEE POSITIONS

Awards Chair: This is a design-your-own. The focus would be on coordinating SWE awards at the section, regional and national level. In my opinion this is the position we least need to fill at this time - the effort can be absorbed by the other board members if necessary. Time Commitment: ~6hrs/month

Professional Development Chair: This position probably has the most flexibility. At this point there is no defined job description. I see it as the facilitator\organizer of all SWE Hartford professional development activities. This would include outreach to our members, organizing a few meetings throughout the year, obtaining speakers, etc. The focus would be on the career development of our members as well as networking. This is truly a "design your own position", but one we are looking to draw on extensively this year, and work as hard as possible to make sure we are catering to ALL of our members. Time Commitment: TBD, but ~2hr/wk

FY10 - EXECUTIVE BOARD BIOS

With a new fiscal year comes another excellent executive board. We would like to welcome the new board and encouraged them to share a little bit about themselves with all the members. Please feel free to personally greet them during our summer events!

PRESIDENT:

Michelle Montepara is a Materials Engineer at Sikorsky Aircraft in Stratford, Connecticut. She is a member of the Dynamic Systems group, supporting production of helicopter blades. Her previous work included qualifying processes and materials for helicopter dynamic components. Michelle received her B.S. in Engineering Science from Smith College in 2005 and her M.S. in Engineering from Purdue University in 2009. She was an active collegiate member of SWE and upon graduation, became the Collegiate Membership Coordinator for Region F. Since then, she has served as Secretary, Newsletter Editor and most recently the Vice President of the Hartford section. Michelle is also a member of the American Society for Metals. Michelle lives in Ansonia, CT although she has traveled extensively for both work and leisure. She also enjoys singing in music choirs in the Boston area and learning how to windsurf.

VICE PRESIDENT & NEWSLETTER EDITOR:

Ashley Phillips is a Manufacturing Engineer at Pratt and Whitney in Middletown, CT. She graduated from RPI in 2006 with a B.S. in Industrial and Management Engineering and also received her M.S. in Management from RPI in 2008. Currently she is pursuing a M.S. in Manufacturing Engineering from WPI. Since 2002, Ashley has been active in both local and regional SWE serving in several positions including Treasurer and President of the RPI section and as Secretary of the Hartford Section and Region F Membership Coordinator. In her spare time she enjoys traveling, playing on recreation softball and volleyball leagues, and cooking.



SECRETARY:

Teresa Amaducci joined the Hartford section last July, after graduating from RPI and moving to Rocky Hill to work at Pratt & Whitney in the Manufacturing Engineering Development Program. She has completed two six month rotations in the Turbine Module Center and is excited to be starting her third rotation in the Engine Center. At RPI, Teresa was active in SWE beginning in her freshman year and is eager to become more involved in the Hartford Section as secretary. Teresa enjoys swimming, being out in the sun, scrapbooking, watching movies, and spending time with friends and family.



TREASURER:

Carol Coppa has been working at Northeast Utilities System for 32 years in the areas of design, engineering and currently, in project planning and management for the Transmission Projects group. She has a B.S. in Civil Engineering from the University of Hartford, a M.S. in Operations Management from Rensselaer Polytechnic Institute, a Masters and an Advanced Certificate in Project Management from the George Washington University, and a Project Management Professional (PMP) certification from the Project Management Institute. Carol, a Life Member since 1986, has been a member of SWE-Hartford Section since 1982 where she has served in various positions at the local and national level. Carol, her husband and 15 year old twin daughters live in Berlin, CT.



COR REPRESENTATIVE:

Christine Lagree currently works as an Industrial Engineer at Hallmark Cards in Enfield, CT. She is a 2008 graduate of Rochester Institute of Technology with a BS/ME in Industrial Engineering. Her previous positions in SWE include RIT Section President, Secretary, and Conference Coordinator.



OUTREACH CHAIR:

Sarah Koenig is a Supplier Quality Engineer at Pratt & Whitney in the International Parts Center, supporting suppliers located in Italy and Switzerland. She is a graduate of the Manufacturing Engineering Development Program. She was very active in her collegiate section of SWE, serving as several different officers, including President. As a professional member, she has served for several years as the Outreach Chair for the Hartford Section, is a member of the national Outreach committee, and is a Life Member. She is currently pursuing her MBA through Carnegie Mellon University. In her free time, she enjoys trying new recipes out with her husband and ballroom dancing.



CERTIFICATE OF MERIT CHAIR:

Claudette Hickey is a Distinguished Engineer and the North America Software IT Architect Community Leader at IBM. She has 25 years of IT experience and 23 years with IBM. Claudette has extensive experience designing, architecting and developing applications using emerging IBM technologies for large and small clients. Claudette currently works with customers designing, architecting and developing complex business solutions using Service Oriented Architectures (SOA) and IBM WebSphere Process Server, WebSphere Enterprise Service Bus (WESB) and other SOA software products. Claudette earned a MS in Computer Science, Rensselaer Polytechnic Institute and a BA in Mathematics from Canisius College. Claudette, her husband and her two daughters reside in Marlborough, CT.



MEMBERSHIP/PUBLICITY CHAIR:

Amy Kokoski is an intellectual property attorney at Axinn, Veltrop & Harkrider. Her practice focuses on patent prosecution and litigation. She has experience in a variety of technologies including consumer products and mechanical, electromechanical, and medical devices. Prior to practicing law, Amy was a mechanical engineer and intellectual property manager at Pratt and Whitney. Amy holds a Juris Doctor and an Intellectual Property Certificate from the University of Connecticut School of Law, and a dual Bachelor of Science in Mechanical Engineering and Aeronautical Engineering from Rensselaer Polytechnic Institute. Amy is a co-chair of the Connecticut Bar Association Young Lawyers' Section Intellectual Property Committee as well as a Captain of the Rensselaer Polytechnic Institute Alumni Association Networking Initiative. Her other memberships include the Connecticut Intellectual Property Law Association, Hartford County Bar Association, and Mensa.



WEBMASTER:

Liz Garypie holds the position of Chief Engineer, NAVAL HAWK Programs at Sikorsky Aircraft in Stratford, CT. In this role, Liz provides overall technical leadership for all US Navy and International NAVAL HAWK development and production programs, including engineering execution, production support, proposal generation and technology requirements and insertion. Liz joined Sikorsky Aircraft in 1999 in the Transmission Engineering group, and has since held a number of positions within Engineering and Programs. In those roles, she has supported both U.S. Military and international programs for the BLACK HAWK and H-53 platforms, including as Team Lead for the Corpus Christi Army Depot Partnership and Team Lead for Israel Air Force S-70 & H-53 programs as part of the Aftermarket Platform. She has also served as the U.S. Air Force and Israel Project Manager as part of the BLACK HAWK program team. Liz earned a Bachelor's degree in Mechanical Engineering from Trinity College, Hartford. She currently resides in Milford, CT and most recently served as President of SWE Hartford for FY08 & FY09.

