



Society of Women Engineers SWE Hartford News

www.swe.org/RegionF/sections/hartford

FY07 Issue 9

June 2007

FY07 Section Officers

President:

Suzanne Woll

suzanne@woll2woll.com

Vice President:

Jonna Gerken

jonnacg@sbcglobal.net

Secretary:

Michelle Montepara

michelle.montepara@swe.org

Treasurer:

Carol Coppa

coppaca@nu.com

In This Issue...

This Month's Meeting...	1
Save-The-Date...	1
Last Month's Events...	2
Upcoming SWE Hartford Events...	4
Local Events...	5
Region F News...	5
SWE National News...	6
Volunteer!...	7
Local Opportunities...	8

News Editor:

Liz Garypie

egarypie@sikorsky.com

FY08 Planning Meeting

Date: August TBD, 2007

Time: TBD

Place: TBD

Join the SWE Hartford Executive Council for the annual planning meeting. Come prepared to share your ideas on how we can make FY08 the best year yet! Stay tuned to the SWE Hartford website and your email for more information about this meeting. Hope to see everyone there! If you are unable to make the meeting but have ideas or suggestions to share, contact Liz (egarypie@sikorsky.com).

The Pampered Chef® SWE Hartford Scholarship Fundraiser

Date: August 23, 2007

Time: 7:00 PM

Place: Suzanne's Home

RSVP: To Suzanne (suzanne@woll2woll.com)

Join us for a FUN fundraiser to support the SWE Hartford scholarship. Learn quick and easy recipes for keeping it cool for summertime at a fun social event. A percentage of the sales will be donated in lieu of host benefits to support the SWE Hartford scholarship. You can also view the website at www.pamperedchef.com and place your orders with Suzanne.



Save-The-Date FY08

August TBD	FY08 Planning Meeting – Stay Tuned!
August 23	SWE Hartford Scholarship Fundraiser
October 25-27	SWE National Conference 2007, Nashville, TN
October 31	SWE Hartford\ALSTOM College Scholarship Application Deadline

Stay tuned for more FY08 SWE Hartford events!

If you are interested in helping coordinate an event, please contact Liz (egarypie@sikorsky.com) or Michelle (michelle.montepara@swe.org).

LAST MONTH'S EVENTS...

SWE Hartford End-Of-Year Banquet

June 7, 2007

Adams Mill Restaurant

Approximately 20 SWE Hartford members and guests gathered at Adams Mill Restaurant in Manchester, CT on Thursday, June 7, 2007, to celebrate all that SWE Hartford had to offer in FY07. During the banquet SWE Hartford recognized this year's recipients of the ALSTOM and SWE Hartford scholarships, Kathryn Czaja and Margaret Hamlin. Kathryn Czaja, a high school senior from RHAM High School, received the ALSTOM Power scholarship in the amount of \$1000, and Margaret Hamlin, a high school senior from Rockville High School, received the Hartford SWE scholarship in the amount of \$500.

Kathryn and her family were able to join us at the dinner, along with Karen Hooper from ALSTOM Power. In the fall, Kathryn will be attending the University of Connecticut and majoring in Chemical Engineering and Material Science.



L to R: Erika Rodriguez (SWE Hartford Scholarship Chair), Karen Hooper (ALSTOM Power) and Kathryn Czaja (ALSTOM Scholarship Recipient)

The members elected to FY08 SWE Hartford Executive Council were introduced. More information about the FY08 Executive Council can be found later in this newsletter. Those who attended the banquet were also treated to a wonderful keynote address, "The History of the Helicopter," by Tom Lawrence of Sikorsky Aircraft. Tom, a Technical Fellow, presented an overview of helicopter development with a focus on the design and technology advances that made modern helicopters so useful. He also shared interesting, and sometimes amusing, anecdotes about designs that both succeeded and failed along the road to what helicopters have become today.

Thanks again to the SWE Hartford FY07 Executive Council officers and committee chairs who dedicated their time to making last year a success: Suzanne Woll, Jonna Gerken, Carol Coppa, Sherisse Hughes, Michelle Montepara, Liz Garypie, Claudette Hickey and Erika Rodriguez.

SWE Hartford wishes everyone a safe and enjoyable summer. See you in FY08!

Election Results – SWE Hartford FY08 Executive Council

Please join us in welcoming the SWE Hartford Executive Council for FY08. FY08 officers will serve from July 1, 2007 through June 30, 2008.

Liz Garypie, President: Liz is an Engineering Manager for Aftermarket Programs at Sikorsky Aircraft in Stratford, CT where she supports international UH-60 and CH-53 customers. Her 8-year career at Sikorsky began in the transmission design group and she has also worked as the Engineering Team Lead for the Corpus Christi Army Depot Partnership. A recipient of a B.S. in Mechanical Engineering from Trinity College in Hartford, Liz also served as Trinity's SWE collegiate section President, Vice President and Secretary. She has been involved with SWE Hartford either as a collegiate or professional member for over 11 years, and most recently served as the Hartford section Newsletter Editor (since 2001) and Webmaster (since 2005). Liz lives in Milford and in her free time enjoys knitting, reading and yoga. Liz is excited about the amazing potential SWE Hartford has for FY08, and encourages all members to share their thoughts and get involved!

Michelle Montepara, Vice President: Michelle is a Materials Engineer at Sikorsky Aircraft in Stratford, CT. In 2005, she received her B.S. in Engineering Science from Smith College. Michelle is currently pursuing her M.S. in Materials Engineering from Purdue University. She began her SWE career as a member and then Vice President of the Smith College chapter. After graduation, Michelle stayed active in the SWE Hartford section and this past year, acted as the section's secretary, the Region's Collegiate Membership Coordinator and is a member of the National Career Guidance Committee. Michelle is thrilled to be the FY08 Vice President and looks forward to "energizing the workforce in the Hartford area."

Carol Coppa, Treasurer: Carol has been working at Northeast Utilities System for 30 years. She is a Project Manager and Lead for the Project Services section of the Shared Services Program Management Office. During her career at NU, Carol has worked in design, engineering, project planning and currently, in project management in the areas of Transmission, Distribution, Generation and Information Technology. Carol has a B.S. in Civil Engineering from the University of Hartford, a M.S. in Operations Management from Rensselaer Polytechnic Institute, a Masters and an Advanced Certificate in Project Management from George Washington University, and a Project Management Professional (PMP) certification from the Project Management Institute. Carol is a life member of the Society of Women Engineers (SWE), and has served the Society in many positions over the years, including: Treasurer of Hartford Section (2001 to present), Director, New England Region (1994 to 1996), National Section Representative (1989 to 1994), President of Hartford Section (1987 to 1989), and Treasurer of Hartford Section (1985 to 1987). She also is an active member of the Board of Visitors for the College of Engineering, Technology and Architecture at the University of Hartford and has served on an advisory committee to the State of Connecticut's Permanent Commission on the Status of Women. From 1993-1996, Carol served on the State of Connecticut Council on Vocational-Technical Education representing the private sector. Carol has been married for 18 years and has 13-year-old twin daughters. In her limited spare time she enjoys a round of golf and gardening.

Sherisse Hughes, COR Representative: Sherisse is a Project Engineer for air conditioning systems at Hamilton Sundstrand. She has been involved with SWE for about 20 years, since she was a mechanical engineering student at the University of New Mexico in Albuquerque, where she served as student section president and treasurer. Sherisse also participated in forming the Central New Mexico professional section, and was the volunteer coordination chair for the 1996 national conference in Albuquerque. She relocated to Hartford in 1997 and served as section president for 3 years, section treasurer for a few years, and has been section rep for three years. She has also been a Region F officer, coordinating the region conference for 5 years and serving as Region F treasurer for 4 years. Sherisse lives in Simsbury with her husband, Trevor, and 4 girls, Charlotte age 1, Elyse age 2, Rosalie age 4, & Lauren age 7. She is also the owner of CJ's Wood Pellets in Manchester and Windsor Locks.

Jennifer Thomas, Secretary: Jennifer grew up in Miami, FL. She attended the University of Central Florida and graduated in May 2006 with a B.S. in Aerospace Engineering. At UCF she was President of SWE, Vice President of NSBE and an active member of Delta Sigma Theta Sorority, Inc. Upon graduation, she moved to CT and accepted a position in the engineering rotation program at Pratt & Whitney. She is currently in her second rotation in the Operability group and has also worked in Compression System Aerodynamics. She is currently active in SWE Hartford, the Collegiate Interests Committee (1 year) and as a Collegiate Leadership Coach (3 years). She loves dancing, traveling, volunteering and trying new restaurants.

UPCOMING SWE HARTFORD EVENTS...

Calling All Ideas! SWE Hartford FY08 Member Survey & Planning Meeting

Greetings SWE Hartford Members!

FY08 is upon us and promises to be another fun and exciting year for our Section at the local, regional and even national level. As is typical with the beginning of a new fiscal year, our **FY08 Planning Meeting** will be held in August. Stay tuned to the SWE Hartford website and your email for details about the meeting date, time and location.

The FY08 SWE Hartford Executive Council wants to make sure our section events are beneficial to all our members. Whether or not you will be attending the planning meeting in August, we ask that you please take a few minutes to fill out the **SWE Hartford FY08 Member Survey**, which will be arriving in your inbox in late June or early July. The responses received will be used during the planning meeting to help tailor our FY08 events. This is a chance to voice your opinion and let us know how SWE Hartford can work for you!

We strongly encourage each of you to attend the planning meeting and bring all your ideas for how we can make FY08 our best year yet! If you are unable to attend the meeting but would like to provide some additional suggestions, please feel free to email me at the address below or contact any of the other FY08 Executive Council officers.

Thank you in advance for taking the time to complete the survey, and I hope to see you all in August!

Liz Garypie

SWE Hartford President, FY08

egarypie@sikorsky.com

SWE Hartford\ALSTOM FY08 College Scholarship

**CALLING ALL COLLEGE STUDENTS
(COLLEGE SCHOLARSHIP DEADLINE: OCTOBER 31, 2007)**

On behalf of ALSTOM Power, SWE Hartford is offering a \$1000 scholarship for college students who are interested in the science and engineering fields. For more information regarding scholarship eligibility requirements, ALSTOM Power, SWE Hartford and for a copy of the scholarship application please visit the following website:

<http://www.swe.org/RegionF/sections/hartford/SWEALSTOM2.shtml>

We look forward to reviewing your applications.

Don't Forget...

If you want to get more involved in SWE Hartford we still need enthusiastic members to chair our other open committees or organize events. Check out the openings listed on page 7 of this newsletter and also on our website!

LOCAL EVENTS...

Rensselaer Professional Engineers Exam Review Program

Rensselaer has a Professional Engineers & Land Surveyor Exam Review Program. Weekly classes are held at Rensselaer in Hartford. They are now gearing up for the Fall 2007 Session, which begins in August.

Rensselaer's Hartford Campus has prepared over 2,000 engineers to pass the standardized examinations offered by the National Council of Examiners for Engineering and Surveying (NCEES). This series of courses can help you meet the challenge of the standardized examinations for the Fundamentals in Engineering (EIT) Exam; Civil, Mechanical, Electrical, Environmental Principles and Practices (PE) Exams; as well as the Land Surveyors Exam.

Course Format: Courses are conducted in face-to-face sessions (evenings and Saturdays). Classes are relatively small and students are encouraged to ask questions and clarify points not immediately understood. Experts in each of the specific engineering areas review and solve problems judged to be representative of the type and complexity encountered on the exam. The Review Programs are conducted twice a year to coincide with the exam dates.

Check the Rensselaer Web site for more information, including Open House dates, or to register for a Review Program: www.ewp.rpi.edu/rcpd.

REGION F NEWS...

2007 Region F Conference Highlights

Submitted by: Michelle Montepara

This year's Region Conference was held at Northeastern University in Boston, MA. Many of our Hartford Section members attended and some presented training and technical talks at the conference. This year's theme was "Reaching for the Stars". Fitting with this theme, SWE was honored to have keynote speaker Dr. Kathryn Thornton, a veteran astronaut who holds the women's record for the most and longest duration extravehicular activity in space. Dr. Thornton is a dynamic and accomplished engineer with an interesting career and many stories to share!

The 2007 conference set new records for Region F in both professional and student attendance at a conference. This conference was a unique opportunity to network with other engineers in a relaxed atmosphere and gain perspective from engineers in different stages of their career. There were many opportunities for professional development with five tracks to choose from such as Technical, Work/Life Balance, SWE Leadership modules, and even Technical Tours to some of the labs at Northeastern's Engineering school. Our own 2007 SWE National President, Jude Garzolini joined in on the Region F fun and participated in a panel entitled Navigating Your Career as well as giving the conference opening remarks.

On Sunday, SWE leaders had the opportunity to brainstorm and discuss region business including our advertising policy.

The 2008 Region F Conference will be held at Olin College in Needham, MA. See you there!

SWE NATIONAL NEWS...

SWE Dues Renewal

Submitted by: Jonna Gerken, FY07 SWE Membership Committee Chair

April showers bring...SWE dues renewals! It's that time of year again when we all (except life members) receive a letter/email from SWE HQ requesting we renew our SWE dues for the upcoming year.

Why should you renew now? Because you will receive uninterrupted member services for the upcoming year (July 1, 2007 thru June 30, 2008) including all member emails, on-line services, newsletters, web seminars, and the award-winning SWE Magazine. You will also be helping your local SWE section get their dues rebates on time, enabling them to provide you with more benefits in your local area. (Plus no more emails to remind you!)

What are my renewal options? You can renew fastest & easiest by going to <https://www.swe.org/MSC-SWE/renewredirect.aspx> (or www.swe.org, Member Services, Membership Renewal). You can also send back your renewal notice via mail to HQ.

What about collegiate upgrades? Graduating students can renew their SWE membership at a reduced rate for the first 2 years out of school. Many sections also offer free upgrades to students in their area. Check with your local SWE section (professional and collegiate) for upgrade programs.

This is also a great time to check your profile and update as necessary. Make sure your contact information is correct (mail & email), that your education records are complete, and that your employment history is updated. This information is used for a variety of reasons: targeting SWE services, creating new programs, and approving of member grade changes (i.e. member to senior member).

For more information on your dues, member benefits, and other membership information, please contact HQ, your Region Membership Coordinator, or your Region Collegiate Membership Coordinator. Looking forward to a great FY08!

SWE07 National Conference Registration Now Open

October 25-27, 2007

Nashville, TN

It's where we all come together: to share, to network, to learn, and to get ahead. It's SWE07, the Society of Women Engineers National Conference. Join us this October in Nashville for the largest and most comprehensive career advancement and professional development event for women engineers. This year's theme is "Women in Tune with Technology." Be inspired while having fun. SWE 2007 networking and recognition events bring savvy technical women together in a variety of environments. Only the SWE conference lets you hear the motivational words of our keynote speaker or award recipients, learn about career opportunities from top employers, and network with other women engineers and technologists all in one three day event.

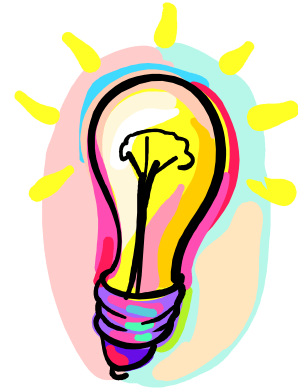
Registration is now open at www.swe07.org, and the full conference schedule will be available July 1st.

SWE Hartford Members - Please let Liz (egarypie@sikorsky.com) know if you are planning to attend the conference. Thanks!

VOLUNTEER!

Section Bylaws Update

The National and Region bylaws have been updated, and now is the time to update the **Hartford Section bylaws**. We are looking for SWE Hartford members who would like to assist in revising this document and bringing it to the section for a review and vote. Contact Michelle (michelle.montepara@swe.org) if you are interested in gaining an inside look at how we operate!



OPEN FY08 COMMITTEE CHAIRS!

We need FY08 committee chairs to round out our SWE Hartford Executive Council for next year. Openings include:

- **Career Guidance\Outreach Chair** (K-12 and Collegiate)
- **Professional Development Chair**
- **Awards Chair**
- **Newsletter Editor**
- **Webmaster**

If you are interested in any of these positions or want more information, please contact Liz (egarypie@sikorsky.com) or any of the other FY08 officers.

Calling All Articles!

The SWE Hartford News is always looking for new and interesting material for its pages. If you have something you think would be of interest to the membership or would like to see included, email Liz (egarypie@sikorsky.com). Information for the next monthly newsletter must be received by the 28th of the previous month.

We Still Have...Open Section Positions!!

Have you wondered why you should be involved in SWE? We need a **Coordinator to lead the generation of a list of SWE local Section Job Descriptions** and the corresponding Skills Competencies gained. The list will be used to highlight the benefits of involvement and will be posted on our website. The purpose is to market the personal development benefits to members and companies. Other members are willing to help.

Are you blessed with the gift of gab? We need SWE members interested in **hosting Round Table meetings** at their facilities. Arrange a place to meet such as your cafeteria. Tell your colleagues about SWE while having lunch and sharing your experiences.

Immediate Need for Student Section Counselors. Counselors need to contact SWE chapter officers and offer help. Maybe it's a trip to join one of their meetings and talk to the students about your job. Maybe it's information about how to participate in one of our meetings. Maybe it's giving them ideas about how to increase membership. The Section membership is your resource so you are not alone if you need help too.

Interested in speaking at a local school? Or just coordinating speakers? Become our **Speakers Bureau Coordinator**. You can shape this commitment to be as little or as much as you'd like it to be.

If you are interested in any of the positions listed above, please contact Liz (egarypie@sikorsky.com) or Michelle (michelle.montepara@swe.org).

LOCAL OPPORTUNITIES

As a service to our members, job opportunities and advertisements from local companies are included below. If you are interested in any of the opportunities listed, please contact the individual company directly via the POC listed. If you would like to advertise your company or job opportunity here, please refer to the SWE Hartford website (www.swe.org/RegionF/sections/hartford) for the advertising policy and procedures. Thank you!

Coming Soon!

Do you have a professional organization you belong to that you think would be of interest to other SWE Hartford members? Please let Liz (egarypie@sikorsky.com) know and we'll include it in the next issue.

Don't Forget the SWE Hartford Website...

www.swe.org/RegionF/sections/hartford

Always remember to check out the SWE Hartford website for up to date information on all SWE Hartford news and events. Recently added to the website are: FY08 Volunteer Opportunities & Open Committee Chairs, the 2007-2008 SWE Hartford \ ALSTOM College Scholarship and pictures and descriptions of past events. Let your SWE Hartford website work for you – contact Liz (egarypie@sikorsky.com) with suggestions!



THIS SPACE FOR RENT...

SWE Hartford wants to hear from you! Have you recently...

- Received a promotion?
- Moved to a new and exciting position?
- Completed a great project?
- Attended an interesting lecture, seminar or conference?
- Read a good article or book?
- Added a new member to your family?

Let us know!

We want to publicize the accomplishments of our members. Send a note to Liz (egarypie@sikorsky.com) with your news and we'll take it from there!



Society of
Women Engineers

ASPIRE • ADVANCE • ACHIEVE